

The image shows the interior of a grand, historic hall. The walls and ceiling are made of dark, polished wood. The ceiling is vaulted and features a large, ornate compass rose in the center. Four circular recessed lights are mounted on the wall, and two windows are visible at the bottom. The overall atmosphere is warm and elegant.

YOUR EVENT

*at the*

CROSLEY



Imagine your event amid the grandeur of a bygone era. You and your guests will walk in the footsteps of the titans of America's Roaring 20s, as your event creates a history all its own.



Conveniently located between Bradenton and Sarasota, this historic estate was built in 1929 and served as the winter home of Powel Crosley, the American innovator who is most revered for bringing radio to the masses through the manufacturing of inexpensive radios during radio's first defining decade.



Here, every view offers stunning scenes, creating picturesque memories of a lifetime. Whether your guest list is 20 or 1,000 you'll find the Crosley easily adapts to become the perfect setting. Indoors, outdoors, from business meetings to gala receptions, we can accommodate them all.

Come discover the area's most impressive venue and all you need for the most perfect event possible.

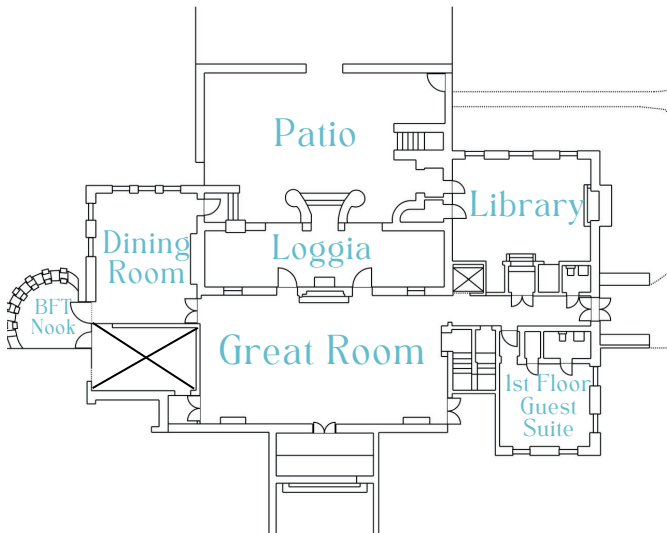




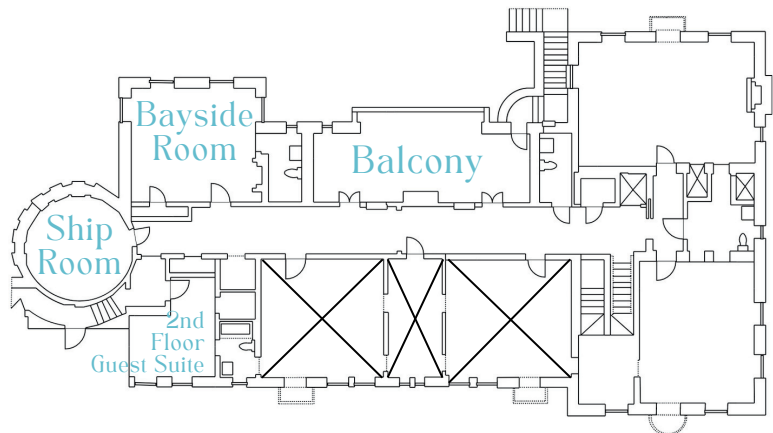


# RENTAL & RATES INFORMATION

## First Floor



## Second Floor



## Crosley Estate Event Rental

Prices vary by the day of the week | Exclusive rental window between 12pm - 11pm | Crosley Estate Event Rental and Event Rental plus Lawn include all public areas on the 1st & 2nd floors, six restrooms, patio, & pavilion; public areas are the rooms noted in the diagrams above | Available 18 or less months prior to requested date

\$4500 - Monday - Wednesday | \$5500 - Thursday | \$7000 - Fridays & Sundays\* | \$7500 - Saturday

\*Sundays before holidays charged at Saturday rate

## Crosley Estate Business Meeting Rental - Exclusive

\$2000 | Available Monday through Friday only; based upon availability | 8 hours rental window between 7am - 11pm; limited additional hours available upon request and availability | Access to full first floor, Gwendolyn's and Powel's rooms, all restrooms, Balcony, Patio and Pavilion | Tables and Chairs with one set and strike included; facility owned equipment is limited and any additional needs must be rented through exclusive caterer or rental company | Available 4 or less months prior to requested date

## Bayfront Lawn

\$1000 | Access to set-up on the lawn can be added to the Crosley Estate Event Rental and the Crosley Estate Business Meeting Rental - Exclusive

*Prices listed above are not tax inclusive. All prices are subject to change without notice.*





# ADDITIONAL RENTAL TYPES & RATES

## Crosley Estate Business Meeting Rental - Non-Exclusive

\$750 | Available Monday through Friday only; based upon availability | 8 hours rental window between 7am - 11pm; limited additional hours available upon request and availability | Access to one room only - Gwendolyn's or Powel's on the second floor | Tables and Chairs with one set and strike included | Available 2 or less months prior to requested date

## New Year's Eve Rental Package

\$10500 | New Year's Eve rental package includes Crosley Estate Event Rental plus Lawn (see above for details) from 1pm - 2am | Includes the holiday surcharge and a 1-hour rehearsal (non-holiday)

## Photo Shoot Rental

\$200/hour | Personal photos only - headshots, team/group, graduation, etc. | 1-hour minimum and 4-hours maximum between 7am - 11pm | Can only be scheduled within 30 days of the requested event date

## Additional Event Rental Hours

\$250/hour | Additional hours outside of the standard, rented time frames | available upon request and based on availability

*Prices listed above are not tax inclusive. All prices are subject to change without notice.*





# YOUR EVENT *at the* CROSLY

## *From Board Meeting . . .*

Let us set you up for success! Our business meeting rental includes table and chair set-up.





# YOUR EVENT *at the* CROSLEY

## *to the Ballroom...*

The Crosley Estate interior offers an intimate dining or cocktail area with grand vintage design.



Fox & Films Photography





# YOUR EVENT *at the* CROSLEY

## *And to the Bay*

The Bay Side Lawn at the Powel Crosley Estate overlooks the shimmering waters of Sarasota Bay with spectacular sunset views & romantic starlight dining. Our Bay Side Pavilion is a beautiful covered outdoor option for cocktail hour or an intimate dinner.







# CROSLEY ESTATE

## *Exclusive Catering List*

### Mattison's Catering

941-921-3400

mattisons\_sales@mattisons.com

### Pier 22 Catering

941-748-8087

kim@pier22.com

### Michael's On East

941-366-0007

Phil.Mancini@bestfood.com

### Puff 'n Stuff

813-382-5901

lauren@puffnstuff.com

### Milan Catering & Event Design

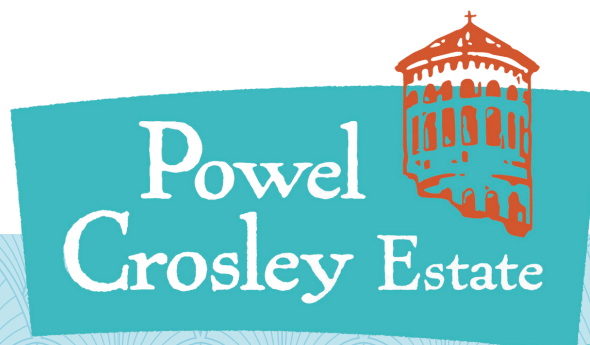
941-312-0000

mroxana@milancatering.com

### Simply Gourmet by Metz

941-218-3671

bsouflis@metzcorp.com





# FREQUENTLY ASKED QUESTIONS

Below is a list of our frequently asked questions to help you prepare for your event. If you have any additional questions, please contact our sales office.

**SALES OFFICE** to contact the Crosley Estate Sales Office, email [sales@bacvb.com](mailto:sales@bacvb.com) or call 941-722-3244 front desk extension 0. The sales team is available Monday-Friday, 8am-4pm.

**How do I tour the Powel Crosley Estate?** Visit [www.PowelCrosleyEstate.com](http://www.PowelCrosleyEstate.com) and click the "Schedule a Site Visit" button to schedule a site visit.

**Are prices negotiable?** No. They are preset.

**When are deposits due?** If your event is more than 6 months away, one third (1/3) of the rent is due with the signed agreement and the balance is due six months prior to the event. If your event is within 6 months, half the rent is due with the agreement and the other half is due one month later. Total of known charges is due ten days prior to the event taking place.

**What forms of payment do you accept?** Through our on-line payment portal, we accept all major credit cards. There is no fee for a credit card payment. Checks are not accepted less than 21 days prior to the event.

**Is the Crosley Estate ADA compliant?** Yes. We have a small elevator that goes to all floors as well as several ramps for scooters, wheelchairs, etc. We highly recommend guests with mobility issues always use the lifts and not the stairs.

**What is the capacity of the outdoor space at the Crosley Estate?** The Bayside Lawn can host upwards of 800 people for a banquet. Large parties need additional advanced planning. The pavilion seats 80+ people for a ceremony and 50-60 for a seated meal.

**What is the capacity of the indoor space at the Crosley Estate?** The Great Room can hold a max of 90 for a seated dinner and the Library and Dining Room can accommodate up to 32 guests per space for a seated dinner for a total of 150 guests inside.

**What is the sales tax?** Manatee County Sales Tax is 7% although the rental tax is slightly lower.

**What caterer can I use?** Our venue offers our clients the opportunity to choose from six caterers. The caterers have been selected through an extensive evaluation process to provide our customers with quality catering options. Self-catering or requesting caterers that are not on our approved list is prohibited. The Powel Crosley Estate does collect at 12% - 20% commission fee from the caterers to offset our expenses related to food and beverage services. The caterers have the option of absorbing the fee within their per person cost to the customer or adding it as a separate line item on a customer's invoice.

**What rental items are required to be handled by the caterer?** Tents, lighting, linens, tables, chairs, furniture, and dance floors are required to be handled by the caterer. The only rental exceptions are listed below.

**What rental items are not required to be handled by the caterer?** Transportation (limos, carriages, etc), flowers, formal wear or clothing, cakes, all entertainment, photographer/videographer and wedding planners.



# FREQUENTLY ASKED QUESTIONS

**Are tables and chairs available?** We provide 20-60" round tables, 12-8' tables, and 4-6' tables at no cost. Your caterer is responsible for set up and tear down if used.

**Can I bring in linens that I own or some of my own decorations?** That is between you and the caterer. Often home-made or heirloom decorations are used.

**Do you provide event planners?** The Crosley Estate does not provide event planners and does not maintain a list of local event planners.

**Can I bring in my boat or arrive by boat?** Yes. The Powel Crosley Estate offers a large, deep water boat basin for docking and can provide you with the Nautical Navigation instructions.

**Can I have live music or a DJ?** Basic power is available for bands, string quartets, DJ's, etc. However, you will need to communicate specific power needs with your facility representative. You must also follow specific decibel guidelines per county ordinances. All amplified music should be moved indoors at 11pm.

**Can I hang lanterns, chandeliers from the trees?** Yes, speak with your caterer.

**What kinds of flowers are allowed at the Powel Crosley Estate?** Anything other than live red or dark colored rose petals is permitted for use at the facility. Rose petals leave behind stains and can damage the historic facility. Silk flowers should only be used in a controlled environment (no petals).

**That tree is in my way. Can it be removed?** No, we do not change landscaping.

**What items can be tossed during an event?** Birdseed, Biodegradable items, and rice are not permitted as they are hard to clean up and can be unsafe for guests to walk on. Alternatives could be bubbles or larger, easier items to clean up like mini beach balls, glow sticks, or streamers that are attached to a base. Dried herbs kept in little bags can also be used; noise-based items such as tambourines, maracas, or bells can be used. Crosley Estate staff clean-up will result in additional charges.

**Why can't I have Sky Lanterns or drones?** The facility is in the flight pattern of the Sarasota Bradenton International Airport. Regulations do not allow anything to be released in the air including birds, balloons and especially sky lanterns. The FAA prohibits drones with our proximity to the airport.

**Can I have professional fireworks brought in?** Yes, professional fireworks can be set off from a floating barge off property using a licensed pyrotechnic company. You must alert your Facility Representative.

**Are candles allowed?** All candles must be in a container and the top of the flame must be 2 inches below the top of the container. Unity candles are permitted during the ceremony only.

**Are sparklers allowed?** Sparklers are not allowed at the Crosley.

**Can I leave my car overnight?** Plan ahead with designated drivers. Cars are occasionally left overnight, however the property is not open every day and may not be open the following day for pickup. You may want to consider hiring a car service in advance to assist your guests.